

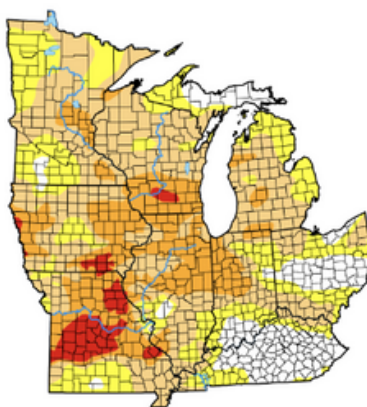
# OF WHEAT & WINDROWS AGRICULTURE AND NATURAL RESOURCES NEWSLETTLER July 2023

## Drought in the Corn Belt is Concerning

By: Dr. James Mitchell, University of Arkansas

U.S. Drought Monitor  
Midwest

July 4, 2023  
(Released Thursday, Jul. 6, 2023)  
Valid 8 a.m. EDT



**Intensity:**

- None
- D0 Abnormally Dry
- D1 Moderate Drought
- D2 Severe Drought
- D3 Extreme Drought
- D4 Exceptional Drought

The Drought Monitor focuses on broad-scale conditions. Local conditions may vary. For more information on the Drought Monitor, go to: <https://droughtmonitor.unl.edu/About.aspx>

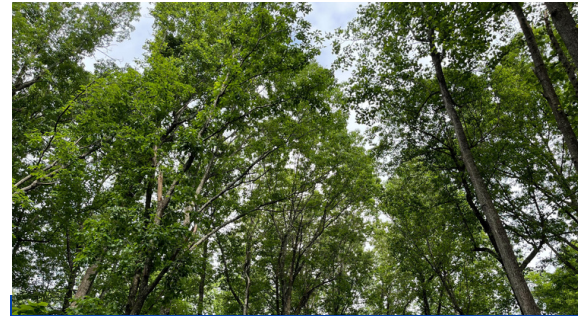
**Author:**

Curtis Riganti  
National Drought Mitigation Center



The June Acreage report released last week by USDA-NASS brought some good news for livestock producers. The report places the total U.S. planted corn acreage at 94.1 million acres. USDA's latest estimate for 2023 corn acreage is 2.3% higher than their previous estimate and 6.2% percent higher than the last year's acreage. All top 5 corn states had an increase in corn acreage except for Nebraska, which had a 1.0% decline in acreage for corn.

The relevance of the June Acreage report for livestock producers is the impact acreage will have on feed prices. While the report brought good news regarding corn acreage, there are still concerns regarding total corn supplies for the 2023-2024 crop. These concerns are about drought and its impacts on corn yields. Even small weather-induced yield declines could result in significant price swings for corn.



## In this Issue

Drought in Corn Belt.....	1-2
July Grazing Tips.....	3
CAIP.....	3
Dates to Know.....	4
Agent Remarks.....	4
Farm Safety Night.....	5
<b>KSU TTT.....</b>	<b>6</b>
2023 KY WOSC.....	6
Beef Cattle Workshop.....	6
Sausage Making.....	6
<b>Oven-Baked Frog Legs.....</b>	<b>7</b>
<b>Dead Animal Removal.....</b>	<b>7</b>
<b>ANR Facebook.....</b>	<b>7</b>



The map shown above is the latest U.S. Drought Monitor for the region classified as the Midwest. Currently, 87.8% of the Midwest is categorized in D0-D4 drought. Compare that to a year ago when 50.9% of the Midwest was in D0-D4 drought. The big difference between this year and last is the more severe drought categories. Last year only 1.5% of the Midwest was in D2-D4 drought (severe to exceptional drought). The most recent drought map has 24.9% of the Midwest categorized as D2-D4 drought.

Cattle markets are expected to remain strong through the remainder of 2023 and into 2024. However, many people have noticed that profitability is not as strong as it was during previous years of high cattle prices. Costs are still a big problem for many producers. Part of that cost is feed prices, and the drought impacting the major corn-producing states is a slight cause for concern. Overall though, most agree there's more to be optimistic about in the cattle industry.

### The Markets

Many auctions were closed last week due to the holiday. Futures prices were a little softer compare to the week before.

<b>Cattle Market Report</b>		For Weeks Ending On			% Chg	% Chg	Chg Prev.
Prices \$/cwt. Sources: USDA, LMIC, and CME		7/7/23	6/30/23	7/8/22	Prev. Week	Prev. Year	Week
<b>500-600 lb. Feeder Steers</b>	Mississippi M/L #1-2	N/A	\$219.99	N/A	N/A	N/A	N/A
	Arkansas M/L #1	\$229.15	\$228.72	\$178.84	0%	28%	\$0.43
	Kentucky M/L #1-2	\$223.22	\$238.74	\$171.10	-7%	30%	(\$15.52)
	Oklahoma City M/L #1-2	N/A	\$244.86	N/A	N/A	N/A	N/A
	Alabama M/L #1	N/A	\$243.60	N/A	N/A	N/A	N/A
	Tennessee M/L #1-2	\$240.33	\$239.82	\$164.34	0%	46%	\$0.51
	Missouri M/L #1-2	N/A	\$251.24	\$184.04	N/A	N/A	N/A
<b>700-800 lb. Feeder Steers</b>	Mississippi M/L #1-2	N/A	\$200.39	N/A	N/A	N/A	N/A
	Arkansas M/L #1	\$220.47	\$195.40	\$158.29	13%	39%	\$25.07
	Kentucky M/L #1-2	\$225.98	\$211.96	\$160.10	7%	41%	\$14.02
	Oklahoma City M/L #1-2	N/A	\$217.35	N/A	N/A	N/A	N/A
	Alabama M/L #1	N/A	\$209.32	N/A	N/A	N/A	N/A
	Tennessee M/L #1-2	\$203.37	\$204.62	\$153.00	-1%	33%	(\$1.25)
	Missouri M/L #1-2	N/A	\$225.03	\$161.89	N/A	N/A	N/A
<b>Negotiated Fed Steers</b>	Live Price	\$182.06	\$181.33	\$144.35	0%	26%	\$0.73
	Dressed Price	\$289.99	\$289.34	\$232.22	0%	25%	\$0.65
<b>Boxed Beef Cutout</b>	Choice Value, 600-900 lb.	\$321.97	\$329.19	\$267.17	-2%	21%	(\$7.22)
	Select Value, 600-900 lb.	\$290.65	\$297.12	\$241.81	-2%	20%	(\$6.47)

<b>Futures Prices</b>		<b>7/7/23</b>	<b>6/30/23</b>
<b>Live Cattle</b>	August	\$177.00	\$177.18
	October	\$179.38	\$179.55
	December	\$183.18	\$183.52
<b>Feeder Cattle</b>	August	\$245.43	\$247.57
	September	\$248.60	\$250.82
	October	\$250.23	\$252.52
<b>Corn</b>	July	\$5.61	\$5.55
	September	\$4.87	\$4.89

Source: CME Group

## July Grazing Tips

- Continue grazing available summer annuals and apply 40-60 lb N/A to stimulate regrowth.
- Identify fescue pastures for stockpiling. Choose pastures that are well drained, have a strong sod and have not been overgrazed.
- Soil test pastures to determine fertility needs.
- • Using UK variety trial results, select varieties to plant in the fall and order seed.
- If drought conditions limit pasture growth, close off pastures and feed hay in a sacrifice area.

Photo by UK Ag Communications Services.

### MONEY FOR FARM IMPROVEMENTS



#### Eligible Investment Areas:

*Agricultural Diversification*  
*AgTech & Leadership Development*  
*Large Animal - Small Animal*  
*Farm Infrastructure*  
*Fencing & On-Farm Water*  
*Forage & Grain Improvement*  
*Innovative Ag. Systems*  
*On-Farm Energy*  
*Poultry & Other Fowl*  
*Value Added & Marketing*

Administered by  
**Organization**

address  
Danville, KY 40422  
(859) 238-7461

[mary.lawrence@ky.nacdnet.net](mailto:mary.lawrence@ky.nacdnet.net)

### COUNTY AGRICULTURAL INVESTMENT PROGRAM (CAIP)

Applications are available for Boyle County's CAIP to assist farmers in making important farm investments.

#### Application Period:

**July 24 through August 14, 2023**

**No applications will be accepted before July 24 or after August 14**

#### Application Availability:

Boyle County Conservation District  
Monday – Thursday (8:00 a.m. – 4:00 p.m.)

#### For More Information:

Contact: Mary Lawrence at (859) 238-7461 or email [mary.lawrence@ky.nacdnet.net](mailto:mary.lawrence@ky.nacdnet.net) or [Elizabeth.chunglo@ky.nacdnet.net](mailto:Elizabeth.chunglo@ky.nacdnet.net)

All applications are scored, based on the scoring criteria set by the Kentucky Agricultural Development Board.

## Dates to Know

### July

**4th-** Independence Day! The Extension Office will be closed.

**13th-** KATS Spray Clinic

**17th-21st -** Boyle, Lincoln, Powell Counties 4-H Camp Week

**20th-** KSU Third Thursday Thing

**20th-** Danville-Boyle County Farm-City Breakfast from 7:30 to 9:00 am at Boyle County Cooperative Extension Office.

**25th-** UK Corn, Soybean, Tobacco Field Day at UKREC Farm, Princeton, Kentucky.

**26th-** KSU Beef Cattle Workshop at Bluegrass Stockyards, Lexington, KY at 6:00 pm.

**29th-** Kentucky Woodland Owners Short Course in Boyle/Casy Counties.

### August

**1st-** Ag Safety Night at 5:30 pm at Boyle County Cooperative Extension Office.

**5th-** Sausage Making Workshop starting at Boyle County Cooperative Extension Office at 10:00 am.

**15th-** Boyle County Cattlemen's Association Meeting

**17th-27th-** Kentucky State Fair

## Agent Remarks

Hello,

I hope everyone is having a good Summer. It's hard to believe I've been in this position for a year on July 1st. It's been a great first year learning the county and getting to know the wonderful producers and landowners.

Thanks,



Contact me at:  
**(859)236-4484**  
[tyler.ray@uky.edu](mailto:tyler.ray@uky.edu)



# Boyle County Farm Bureau and Boyle County Cooperative Extension Presents: **Farm Safety Night**

**August 1st, 2023**

**5:30 pm**

**Boyle County Cooperative  
Extension Office**

**Speaker: Dale Dobson,**  
Kentucky Department of Agriculture



In efforts to reduce farm related injuries and increase farm safety awareness with an emphasis in grain bin safety the Boyle County Farm Bureau and Boyle County Cooperative Extension presents Farm Safety Night. This event is open to emergency personnel, farmers, and industry professionals. A meal will be served. Please call (859)236-4484 to let us know you're coming by July 31, 2023.



# EDEN SHALE FARM INFRASTRUCTURE TOUR

**THURSDAY, AUGUST 10TH**

8:00 AM

The Eden Shale Farm is managed by Kentucky Beef Network. Infrastructure that can be seen at the farm during the tour includes innovative feeding and watering systems, water harvesting systems, shade structures and cattle handling facilities.



You **must RSVP** as van seating is limited by calling (859)236-4484 or email Tyler.ray@uky.edu. If you do not wish to ride in the van but still want to attend the address is:  
245 Eden Shale Road, Owenton, KY 40359

**This qualifies for CAIP Educational requirements.**

Cooperative Extension Service  
Agriculture and Natural Resources  
Family and Consumer Sciences  
4-H Youth Development

Educational programs of Kentucky Cooperative Extension serve all people regardless of economic or social status and will not discriminate on the basis of race, color, ethnic origin, national origin, creed, religion, political belief, sex, sexual orientation, gender identity, gender expression, pregnancy, marital status, genetic information, age, veteran status, or physical or mental disability. University of Kentucky, Kentucky State University, U.S. Department of Agriculture, and Kentucky Counties, Cooperating.



Disabilities  
accommodated

# BEEF CATTLE WORKSHOP

July 26, 2023, at 6 P.M. EDT

Topic: Heat Stress Management & Forage Testing



CAIP  
Approved

Join us in person: Bluegrass Stockyards, Lexington, KY  
Watch online: YouTube.com/kysuag  
This institution is an equal opportunity provider.

# THIRD THURSDAY THING

Topic: Fencing | Pastured Poultry

July 20, 2023, at 10:00 AM EDT

Join us in person at the Harold R. Benson Research & Demonstration Farm or online!



1525 Mills Lane, Frankfort, KY 40601



[youtube.com/kysuag/live](https://youtube.com/kysuag/live)

CAIP  
Approved

# Sausage Making Workshop

August 5th, 2023

10:00 am

at  
Boyle County  
Extension Office

Sign up by calling (859)236-4484



Join us for the sausage making class and workshop. This will cover basics to sausage making and food safety. The workshop will follow the class. We will be making breakfast sausage. While the class is not limited the workshop is limited to 15 people.

# Upcoming Events

# Recipe

## Oven-Baked Frog Legs



### Oven-Baked Frog Legs

- 1 pound frog legs, cleaned
- Buttermilk, to cover
- ½ cup cornmeal
- ½ cup all-purpose flour
- ½ teaspoon garlic powder
- ½ teaspoon pepper
- ¼ teaspoon salt
- ¼ cup melted butter

In a covered container, soak frog legs in buttermilk for 3 hours or overnight in the refrigerator. Preheat oven to 400 degrees Fahrenheit. Mix cornmeal, flour, garlic powder, and pepper in a plastic bag. Use tongs to remove frog legs from buttermilk. Place one or two at a time in bag with cornmeal mixture to coat. Place frog legs in a greased 13x9 baking dish; sprinkle with salt. Drizzle lightly with melted butter. Cover tightly with aluminum foil and bake 30 minutes, ensure thermometer inserted into the meatiest part of the leg reaches 165 degrees Fahrenheit. Remove foil after 20 minutes to allow frog legs to brown.

Yield: 4 servings

### Nutrition Facts

4 servings per container  
Serving size 4 ounces (157g)

Amount per serving  
**Calories 280**

% Daily Value\*

<b>Total Fat</b> 12g	<b>15%</b>
Saturated Fat 7g	<b>35%</b>
Trans Fat 0g	
<b>Cholesterol</b> 90mg	<b>30%</b>
<b>Sodium</b> 330mg	<b>14%</b>
<b>Total Carbohydrate</b> 22g	<b>8%</b>
Dietary Fiber 2g	<b>7%</b>
Total Sugars 0g	
Includes 0g Added Sugars	<b>0%</b>
<b>Protein</b> 21g	
Vitamin D 0mcg	0%
Calcium 23mg	2%
Iron 3mg	15%
Potassium 382mg	8%

\* The % Daily Value (DV) tells you how much a nutrient in a serving of food contributes to a daily diet. 2,000 calories a day is used for general nutrition advice.

## Soil Testing

Just a reminder Boyle County Extension Office offers **FREE** soil testing to anyone in the county up to 40 samples per person per year. For soil sample bags or more information call the Boyle County Extension Office at (859)236-4484.

## Dead Animal Removal

The Boyle County Conservation District and the Boyle County Fiscal Court sponsors the removal of deceased animals in Boyle County. If you have a deceased animal **call (859) 238-1137**, Monday through Friday from 8:00 am to 4:30 pm. The deceased animal needs to be in an accessible area for pick up.



Be sure to follow the **Boyle Co. Agriculture & Natural Resources** on Facebook to stay up to date on events, classes and surveys.



*Tyler Ray*

**Tyler Ray, County Extension Agent for Agriculture and Natural Resources**

Cooperative Extension Service  
Agriculture and Natural Resources  
Family and Consumer Sciences  
4-H Youth Development  
Community and Economic Development

Educational programs of Kentucky Cooperative Extension serve all people regardless of economic or social status and will not discriminate on the basis of race, color, ethnic origin, national origin, creed, religion, political belief, sex, sexual orientation, gender identity, gender expression, pregnancy, marital status, genetic information, age, veteran status, or physical or mental disability. University of Kentucky, Kentucky State University, U.S. Department of Agriculture, and Kentucky Counties, Cooperating.  
LEXINGTON, KY 40546



Disabilities accommodated with prior notification.

---

# **BEEF BASH 2023**

**DATE:** Thursday, September 21, 2023

**WHERE:** University of Kentucky  
C. Oran Little Research Center  
1051 Midway Rd.  
Versailles, KY 40383

**TIME:** Registration starts at 1:30 PM EST  
Programs start at 2:00 PM EST

**Tickets are \$15 and includes meal. To Pre-register, go to [Eventbrite.com](https://www.eventbrite.com) and search Beef Bash 2023**

**MAKE PLANS TO JOIN US!**

**VISIT WITH:**

COMMERCIAL EXHIBITORS  
EDUCATIONAL EXHIBITS &  
DEMONSTRATIONS  
UK PERSONNEL & ADMINISTRATORS  
KCA LEADERSHIP & STAFF